



GLYNDE

BOURNHE

FESTIVAL 2026
21 MAY – 30 AUGUST

FESTIVAL 2026

TOSCA
IL TURCO IN ITALIA
L'ORFEO
BILLY BUDD
ARIADNE AUF NAXOS
DIE ENTFÜHRUNG AUS DEM SERAIL

Passion, blood and betrayal
in Puccini's tragic thriller.

Rome trembles under Scarpia's iron fist. Only the diva Tosca dares defy him – but in a corrupt world, love is no match for power. This high-stakes love story, with its sweepingly romantic score, is staged at Glyndebourne for the first time.

Tosca

Tosca • Giacomo Puccini

Conductor • Robin Ticciati / Jordan de Souza
Director • Ted Huffman
Set Designer • Nadja Sofie Eller
Costume Designer • Astrid Klein
Lighting Designer • DM Wood
London Philharmonic Orchestra
The Glyndebourne Chorus

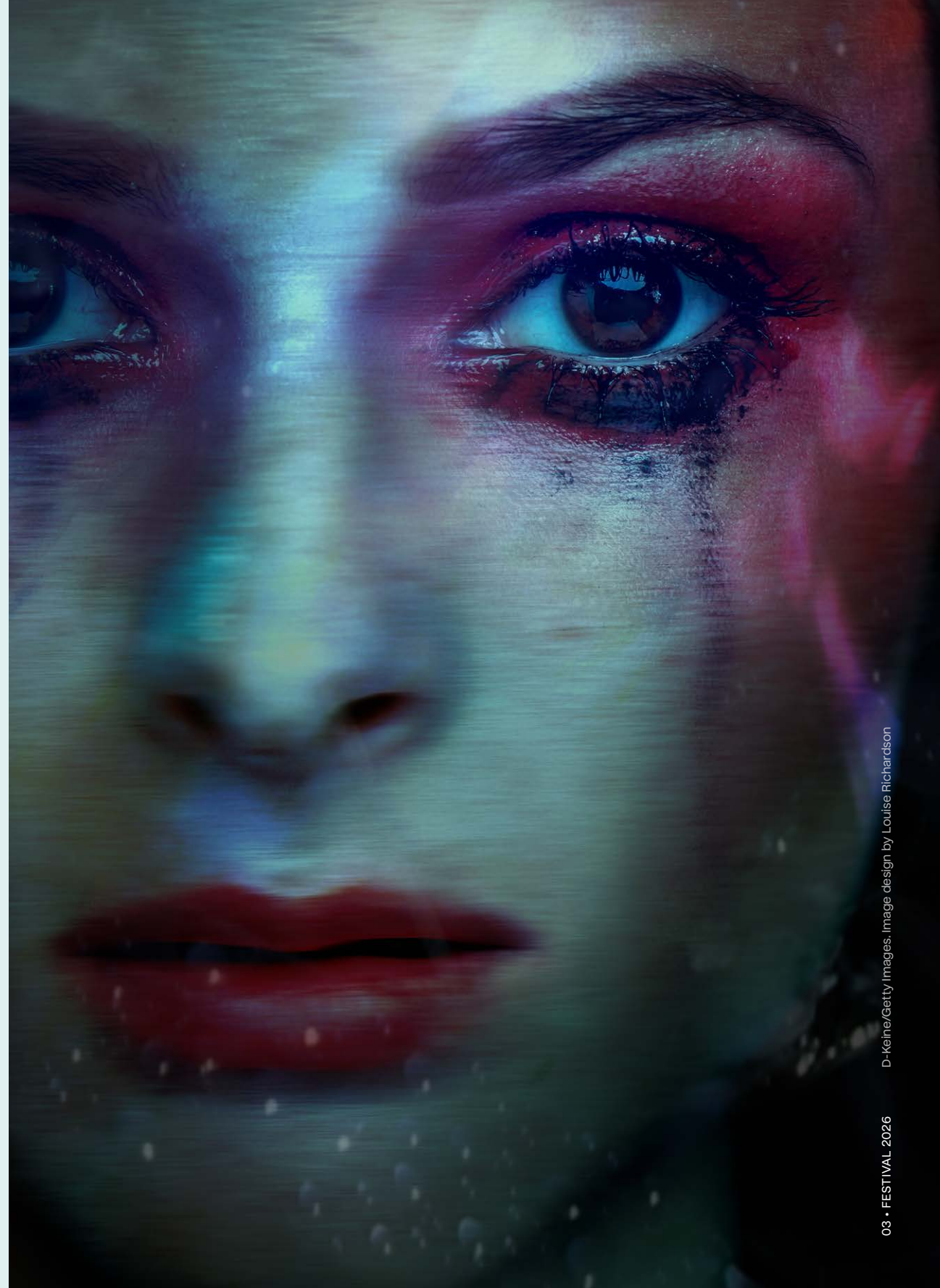
Floria Tosca • Caitlin Gotimer / Natalya Romaniw
Mario Cavaradossi • Matteo Lippi / Atalla Ayan
Baron Scarpia • Vladislav Sulimsky / Alfred Walker
Cesare Angelotti • Kristian Lindroos

Support led by Simon and Harriet Patterson
with a Syndicate and Circle of Individuals

If you're interested in supporting this production,
please contact development@glyndebourne.com

Sung in Italian with English supertitles

21 May – 22 June and 4 – 30 August • £30 – £315
glyndebourne.com/tosca





Il Turco

Fizzing with wit, mischief and flirtation, Rossini's comedy charms and surprises.

A wife in search of romance and a writer in search of a plot: it's a recipe for an uproarious tangle of mistaken identities, intrigues, break-ups and make-ups. Rossini's irrepressible farce returns in Mariame Clément's stylish five-star staging.

in Italia

Il turco in Italia • Gioachino Rossini

Conductor • Vincenzo Milletari
Director • Mariame Clément
Designer • Julia Hansen
Lighting Designer • Bernd Purkrabek
London Philharmonic Orchestra
The Glyndebourne Chorus

Fiorilla • Elena Villalón
Don Geronio • Rodion Pogossov
Prodocimo • Matteo Mancini
Selim • Peter Kálmán
Narciso • Minghao Liu
Zaida • Aytaj Shikhalizada
Albazar • Anle Gou

The music used in these performances is the critical edition by Margaret Bent © Casa Ricordi, Milano (Universal Music Publishing Group).
By arrangement with G. Ricordi & Co (London) Ltd

Support led by Glyndebourne America
With additional support from Prof Frederik Paulsen and François Freyeisen and Shunichi Kubo

Sung in Italian with English supertitles

23 May – 9 July • £30 – £295
glyndebourne.com/turco

The pursuit of love takes us from heaven to hell in this mythic masterpiece.

When death claims his wife on their wedding day, Orpheus must brave the Underworld to rescue her. Can his music move the gods themselves? A classic myth brings together Monteverdi's powerfully expressive score and a new staging by artist and Olivier Award-winning director William Kentridge.



L'Orfeo • Claudio Monteverdi

Conductor • Jonathan Cohen
Director • William Kentridge
Set Designer • Sabine Theunissen
Costume Designer • Greta Goiris
Choreographer • Gregory Maqoma
Lighting Designer • Urs Schoenbaum
Video Designer • Janus Fouché
Orchestra of the Age of Enlightenment
The Glyndebourne Chorus

Orfeo • Krystian Adam
La Musica/Euridice • Francesca Aspromonte
La Messaggera • Xenia Puskarz Thomas
Proserpina • Leia Lensing
Apollo • Caspar Singh
Caronte • Callum Thorpe
Plutone • Davide Giangregorio

The music in these performances is by King's Music Edition. Edition by Clifford Bartlett published by The Early Music Company

Sponsored by Jon and Julia Aisbitt, Dunard Fund USA, and André and Rosalie Hoffmann

Sung in Italian with English supertitles

14 June – 25 July • £30 – £295
glyndebourne.com/orfeo



Anton Karpenko/500px/Getty Images. Image design by Louise Richardson

Britten's gripping psychological drama returns in this award-winning staging.

When a young sailor is unjustly accused of mutiny, it triggers a tragic sequence of events. Good and evil, innocence and corruption come together in this heartbreaking opera, a seafaring epic brought to vivid life in Michael Grandage's evocative, claustrophobic production.

Billy Budd

Billy Budd • Benjamin Britten

Conductor • Nicholas Carter
Director • Michael Grandage
Designer • Christopher Oram
Lighting Designer • Paule Constable
London Philharmonic Orchestra
The Glyndebourne Chorus

Captain Vere • Allan Clayton
Billy Budd • Thomas Mole
John Claggart • Sam Carl

The music in these performances is by kind permission of Boosey & Hawkes Music Publishers Ltd


Support led by Lindsay and Sarah Tomlinson and The Woolbeding Charity with a Syndicate and Circle of Individuals

If you're interested in supporting this production, please contact development@glyndebourne.com

Sung in English with English supertitles

28 June – 30 July • £30 – £280
glyndebourne.com/billybudd





Sparks fly in this uproarious tussle for centre stage.

The richest man in Vienna has commissioned an evening's entertainment. But when a tragic opera and a comedy troupe are forced to share the same stage, all bets are off. Strauss' opera-within-an-opera is part farce, part dream-like fantasy, set to one of his most luscious scores.

Ariadne auf Naxos

Ariadne auf Naxos • Richard Strauss

Conductor • Robin Ticciati
Director & Costume Designer • Laurent Pelly
Set Designer • Massimo Troncanetti
Lighting Designer • Marco Giusti
London Philharmonic Orchestra

Ariadne • Rachel Willis-Sørensen
Composer • Samantha Hankey
Zerbinetta • Alina Wunderlin
Bacchus • David Butt Philip
Music Master • Michael Kraus
Dancing Master • Ru Charlesworth

Support led by Hintze Family Charitable Foundation
With additional support from Myrto and Christian Rochat

Sung in German with English supertitles

19 July – 29 August • £30 – £295
glyndebourne.com/ariadne



Die Entführung

Hanna Shor/Stocksy. Image design by Louise Richardson

Love, intrigue and adventure collide in Mozart's dazzling drama.

Kidnapped by pirates and sold into a harem, Konstanze and Blonde plot their escape. But when hope seems lost, help comes from an unexpected quarter. Mozart's colourful score is perfectly matched by David McVicar's gorgeous, tender staging, set in the sun-filled gardens and shady terraces of an 18th-century palace.

aus dem Serail

Die Entführung aus dem Serail • Wolfgang Amadeus Mozart
(*The Abduction from the Seraglio*)

Conductor • Evan Rogister
Director • David McVicar
Designer • Vicki Mortimer
Choreographer • Andrew George
Lighting Designer • Paule Constable
Orchestra of the Age of Enlightenment
The Glyndebourne Chorus

Konstanze • Liv Redpath
Belmonte • Anthony León
Blonde • Julie Roset
Osmin • Michael Mofidian
Pedrillo • Thomas Cilluffo

The music in these performances is edited by Gerhard Croll (Neue-Mozart Ausgabe). Published by Bärenreiter-Verlag

Supported by a Syndicate and Circle of Individuals

If you're interested in supporting this production, please contact development@glyndebourne.com

Sung in German with English supertitles

31 July – 28 August • £30 – £280
glyndebourne.com/entfuhrung

PERFORMANCES

May

M	T	W	T	F	S	S
			21 5.30pm Tosca		23 5pm Turco	24 4pm Tosca
			28 5pm Turco		30 5.30pm Tosca	31 4pm Turco

June

M	T	W	T	F	S	S
		3 5.30pm Tosca		5 5pm Turco	6 5.30pm Tosca	7 4pm Turco
		10 5.30pm Tosca		12 5pm Turco	13 5.30pm Tosca	14 4pm L'Orfeo
15 5pm Turco	16 5.30pm Tosca		18 5.30pm L'Orfeo	19 5.30pm Tosca	20 5pm Turco	21 4pm L'Orfeo
22 5.30pm Tosca		24 5.30pm L'Orfeo		26 5pm Turco	27 5.30pm L'Orfeo	28 4pm Billy Budd

July

M	T	W	T	F	S	S
		1 5pm Turco	2 5pm Billy Budd	3 5.30pm L'Orfeo	4 5pm Turco	5 4pm Billy Budd
	7 5.30pm L'Orfeo	8 5pm Billy Budd	9 5pm Turco	10 5.30pm L'Orfeo	11 5pm Billy Budd	12 4pm L'Orfeo
				17 5pm Billy Budd	18 5.30pm L'Orfeo	19 4pm Ariadne
20 5.30pm L'Orfeo		22 5.30pm Ariadne	23 5.30pm L'Orfeo	24 5pm Billy Budd	25 5.30pm L'Orfeo	26 4pm Ariadne
	28 5pm Billy Budd		30 5pm Billy Budd	31 4pm Entführung		

August

M	T	W	T	F	S	S
					1 5.30pm Ariadne	2 4pm Entführung
3 4pm Ariadne	4 4pm Tosca	5 4pm Entführung	6 4pm Ariadne	7 4pm Tosca	8 4pm Entführung	9 4pm Ariadne
10 4pm Tosca	11 4pm Entführung	12 4pm Ariadne	13 4pm Tosca	14 4pm Entführung	15 4pm Tosca	16 4pm Ariadne
17 4pm Entführung	18 4pm Tosca	19 4pm Entführung	20 4pm Tosca	21 4pm Ariadne	22 4pm Entführung	23 4pm Ariadne
24 4pm Tosca	25 4pm Entführung	26 4pm Ariadne	27 4pm Tosca	28 4pm Entführung	29 4pm Ariadne	30 4pm Tosca

Gardens open two hours before the start of every performance.
Visit glyndebourne.com/schedule for intervals, trains, audience coach and finish times.

This brochure was printed in September 2025, at this time all information was correct.
However, some information may change so please check glyndebourne.com for updates.

- Tosca
- Il turco in Italia
- L'Orfeo
- Billy Budd
- Ariadne auf Naxos
- Die Entführung aus dem Serail (Entführung)

Art direction: Louise Richardson.
Artwork: Fenton+Partners. Print: Pureprint.
Glyndebourne Productions Ltd, Lewes BN8 5UU
Registered N° 358266 England, Glyndebourne
is a registered charity. Charity N° 243877

TICKETS

Tickets on sale Sunday 8 March

glyndebourne.com/festival

Members' priority booking:

Friday 9 January • Festival Society Members' ballot deadline

Friday 30 January • Associate Members' ballot deadline

Sunday 22 February • Under 40s Members' booking

Tosca

21 May • £30 – £265

24 May • £30 – £280

30 May; 3, 10, 16, 19, 22 June; 4, 7, 10, 13,

18, 20, 24, 27 August • £40 – £295

6, 13 June; 15, 30 August • £40 – £315

Il turco in Italia

23, 28 May; 5, 15 June; 1, 9 July • £30 – £265

31 May; 7, 12, 26 June • £30 – £280

20 June; 4 July • £40 – £295

L'Orfeo

14, 21, 27 June; 12, 18, 25 July • £40 – £295

18, 24 June; 3, 7, 10, 20, 23 July • £30 – £280

Billy Budd

28 June; 5, 17, 24 July • £30 – £265

2, 8, 28, 30 July • £30 – £245

11 July • £30 – £280

Ariadne auf Naxos

19, 26 July; 1, 9 August • £40 – £295

22 July; 6, 12, 16, 23, 29 August • £30 – £280

3, 21, 26 August • £30 – £265

Die Entführung aus dem Serail

31 July; 5, 11, 14, 19, 28 August • £30 – £265

2, 8, 22 August • £30 – £280

17, 25 August • £30 – £245

Visit glyndebourne.com/tickets (or, for Members, see your priority booking guide) for a full breakdown of ticket prices and our seating plan. You will also find information on groups, hospitality packages, subsidised under 30s tickets, and children's tickets for *Il turco in Italia*.

Membership and booking questions:

boxoffice@glyndebourne.com

+44 (0)1273 815 000

Live webchat on glyndebourne.com



Preparing the stage... *Saul*, Festival 2025



Tosca • Il turco in Italia • L'Orfeo • Billy Budd • Ariadne auf Naxos • Die Entführung aus dem Serail